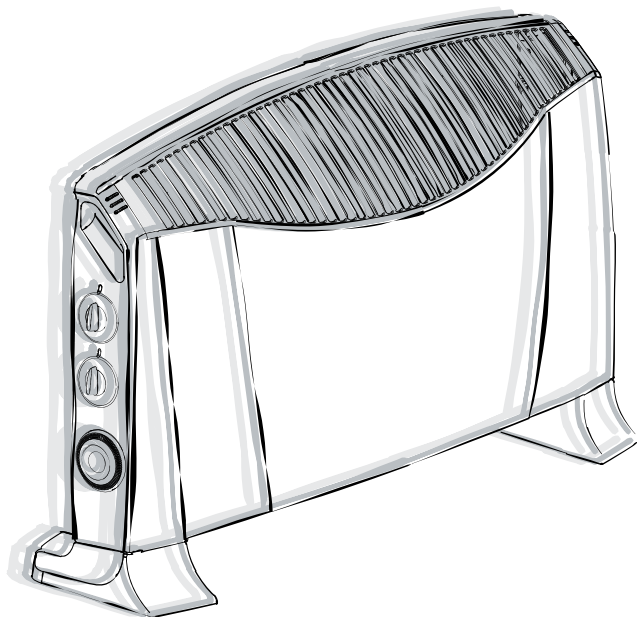


instructions



ELECTRIC CONVECTOR HEATER HCS

Please retain these instructions for future reference



Description of Appliance

The following terms are used throughout the instruction manual

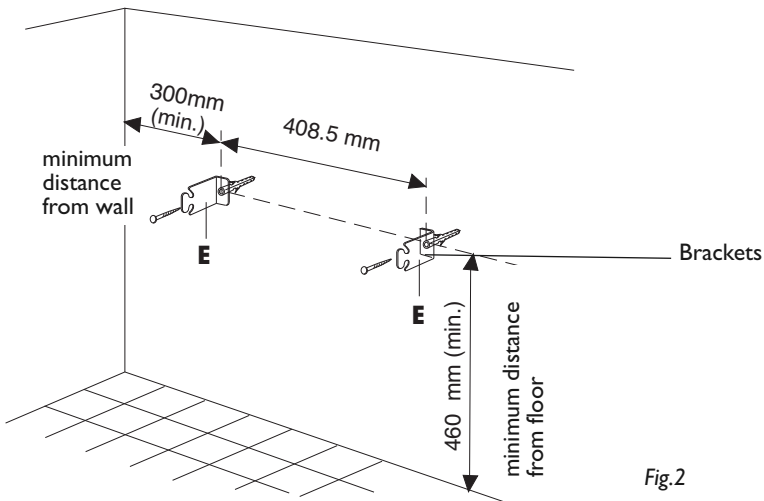
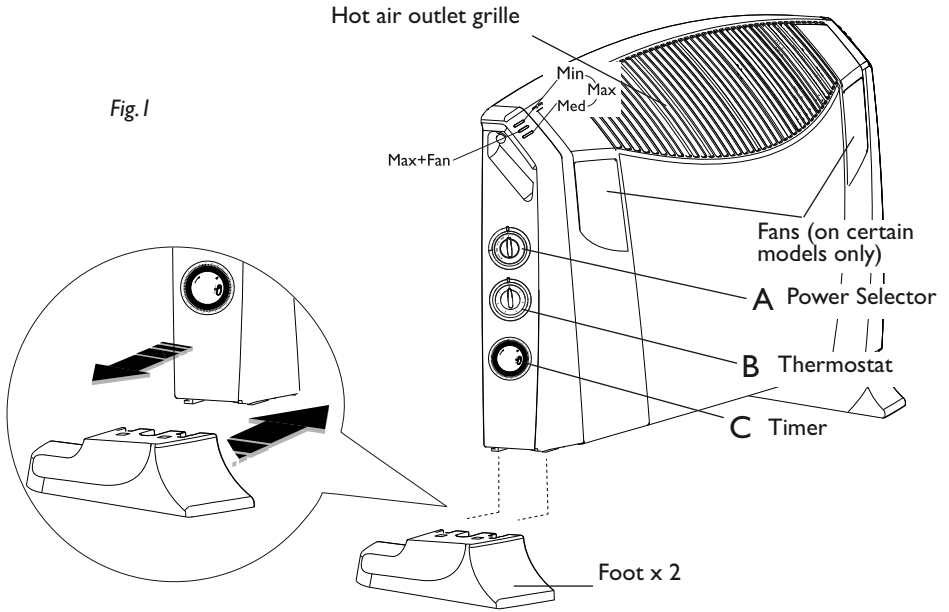


Fig.2

Thank you for choosing this De'Longhi convector heater. To get the best results from your new heater please read these instructions carefully before use. This should ensure optimum results and maximum safety.

SAFETY WARNINGS

- To avoid risk of cable overheating, extension leads must not be used in powering this appliance.
- The first time you use the appliance, operate it for at least 15 minutes with the thermostat at maximum to eliminate the “new” smell. A little smoke due to the protective substances applied to the heating element before transport may be given off. This is completely normal and not a cause for concern.
- Do not use the convector heater near bath tubs, showers, sinks or swimming pools.
- The appliance must not be placed directly under a fixed socket.
- The heater must be positioned 50cm from furniture or other objects. Do not use this appliance in rooms measuring less than 4m². You should avoid positioning it in currents of air which could disturb operation of the heater.
- Do not rest the power cable on the appliance.
- Always use the heater in a vertical position only.
- Do not obstruct the hot air outlet grilles or the air intake grille at the top or the bottom of the appliance.
- If the power cable is damaged, it must be replaced by the manufacturer or an authorised service centre in order to eliminate all risk.
- The appliance is not intended for use by persons (including children) with reduced physical, sensory or mental capabilities, or lack of experience and knowledge, unless they have been given supervision or instruction concerning use of the appliance by a person responsible for their safety. Children should be supervised to ensure that they do not play with the appliance.
- As with any electrical appliance, whilst the instructions aim to cover as many eventualities as possible, caution and common sense should be applied when operating your appliance, particularly in the vicinity of young children.
- This appliance is intended only for a domestic use.

A safety device trips and turns the appliance off in the event of overheating or if it is placed in strong currents of air. To reset, unplug the appliance from the mains socket and leave to cool down (about five minutes), remove the cause of overheating, plug back into the mains and turn on again.

A number of models are fitted with a special device which turns power off if the appliance is tipped over, sloped or knocked. If this occurs, you will hear a beep.



WARNING: In order to avoid overheating, never under any circumstances cover the appliances during operation, as this would lead to dangerous overheating.

CAUTION: In order to avoid a hazard due to inadvertent resetting of the thermal cutout, this appliance must not be supplied through an external switching device, such as an external timer, or connected to a circuit that is regularly switched on and off by the utility.

Important information for correct disposal of the product in accordance with EC Directive 2002/96/EC.



At the end of its working life, the product must not be disposed of as urban waste. It must be taken to a special local authority differentiated waste collection centre or to a dealer providing this service. Disposing of a household appliance separately avoids possible negative consequences for the environment and health deriving from inappropriate disposal and enables the constituent materials to be recovered to obtain significant savings in energy and resources. As a reminder of the need to dispose of household appliances separately, the product is marked with a crossed-out wheeled dustbin.

Electrical connection (U.K. only)

A) If your appliance comes fitted with a plug, it will incorporate a 13 Amp fuse. If it does not fit your socket, the plug should be cut off from the mains lead and an appropriate plug fitted, as below.

With alternative plugs not incorporating a fuse, the circuit must be protected by a 15 Amp fuse. If the plug is a moulded-on type, the fuse cover must be re-fitted when changing the fuse using a 13 Amp Asta approved fuse to BS 1362. In the event of losing the fuse cover, the plug must.

NOT be used until a replacement fuse cover can be obtained from your nearest electrical dealer. The colour of the correct replacement fuse cover is that as marked on the base of the plug.

WARNING: Very carefully dispose of the cut off plug after removing the fuse: do not insert in a 13 Amp socket elsewhere in the house as this could cause a shock hazard.

B) UK Plug specifications: please follow the instructions provided below.

IMPORTANT

The wires in the mains lead are coloured in accordance with the following code:

Blue: Neutral

Brown: Live

As the colours of the wires in the mains lead may not correspond with the coloured markings identifying the terminals in your plug, proceed as follows:

The blue wire must be connected to the terminal marked with the letter N or coloured black.

The brown wire must be connected to the terminal marked with the letter L or coloured red.

If you have a 3-pins plug, do not connect any wire to the "earth" terminal.

Dear Customer – The plug on this appliance will get ‘warm’ during use, this is perfectly normal. This product is A HIGH POWER HEATING APPLIANCE designed to our usual high standards but please make sure your wall sockets are in good condition and the plug is inserted correctly to avoid any accidental overheating.

We suggest that you check the plug AND THE SOCKET regularly if the heater is in prolonged use, if you are in any doubt please consult an electrician.

1. Electrical connections

- Before plugging into the mains, make sure the voltage of your mains supply corresponds to the value Volt indicated on the appliance and that the socket and power line are appropriate for the load required.
- THIS APPLIANCE COMPLIES WITH DIRECTIVE 2004/108/EEC AND ON ELECTROMAGNETIC COMPATIBILITY.

2. Attaching the feet

To fit the feet, proceed as follows: insert the foot into the guide on the side and push as far as it will go until the two teeth hook in place (fig. 1).

3. Wall mounting

IMPORTANT: before drilling the wall, make sure the area is free of electrical wires or pipes. To fix your convector heater to the wall, use the brackets “E” and “F” provided and appropriate screws and wall plugs (provided). Proceed as follows:

- Fix the brackets “E”, making sure the distances are as shown in fig. 2.
 - Hang the heater on the two brackets fixed to the wall. Insert the two brackets “F” in the back of the convector base as shown in fig. 3-4.
 - Mark the bracket fixing points on the wall.
 - Remove the heater, drill the wall and insert the wall plugs.
 - Fix the heater again, inserting the brackets “F” into the holes in the wall using the screws.
- Now your heater is mounted on the wall.

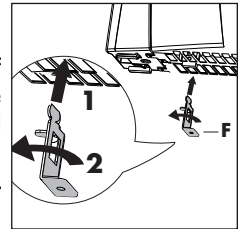


Fig.3

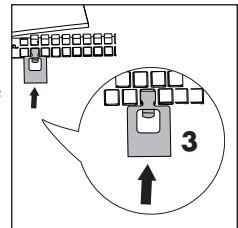


Fig.4

The appliance must not be positioned directly underneath a fixed power point.

Position the appliance in such a way that the plug is easily accessible even after installation.

4. Operation and use

Turning on

Plug into the mains, turn the thermostat dial (B) to maximum and turn the appliance on by means of the power selector (A) as described below.

- Turn the selector (A) to the **Min** position to select minimum power (the Min power light comes on).
- Turn the selector (A) to the **Med** position to select medium power (the Med power light comes on).

- Turn the selector (A) to the **Max** position to select maximum power (the Max power light comes on).

In the fan version, both Min and Med lights come on.

5. Adjusting the thermostat

When the room has reached the required temperature, turn the thermostat dial (B) slowly anticlockwise until the lights go out and no further. The thermostat will automatically regulate the temperature set and keep it constant. In spring or autumn or on mild days, you can save energy by using minimum power.

6. Frost prevention mode

With the thermostat dial in the ❄️ position and one of the power levels selected, the appliance maintains room temperature at about 5°C, preventing freezing with minimal energy consumption.

7. Models with fan

Some models have two fans for faster more even heating. To use this function, turn the power selector (A) to the Max position ❄️ (the corresponding light comes on).

8. Models with 24 hour timer (C)

If you wish to operate the heater without the timer, position the slider on position I.

On the contrary if you wish to operate the heater at a set time, first put the slider (D) on position ⌚ (fig. 5) then proceed as follows:

- Check the time on your clock or watch. If it is 10.00 for example, turn the numbered programmer disk until the number 10 coincides with the pointer marked on the programmer.
- Set the periods of time during which you want the appliance to operate by pushing the teeth outwards. Each tooth corresponds to a period of 15 min. At the end of this procedure, sectors corresponding to the operating periods can be seen.
- In this way, the appliance will function automatically each day at the times set. (Important: the appliance must always be plugged into the socket)
- To modify programming, return the teeth to the initial position and set the new operating periods.
- To turn the appliance off completely, turn the dial (A) to the “0” position and unplug from the mains.

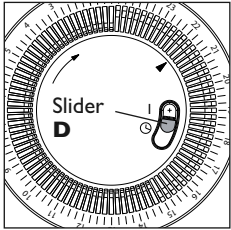


Fig.5

9. Maintenance

Always unplug from the mains socket before cleaning.

The convector heater requires no special maintenance. It is sufficient to remove dust with a soft dry cloth. Clean when cold only. Never use abrasive powders or solvents.

De'Longhi Appliances, via Seitz, 47 31100 Treviso Italia

5711310041/03.12_07